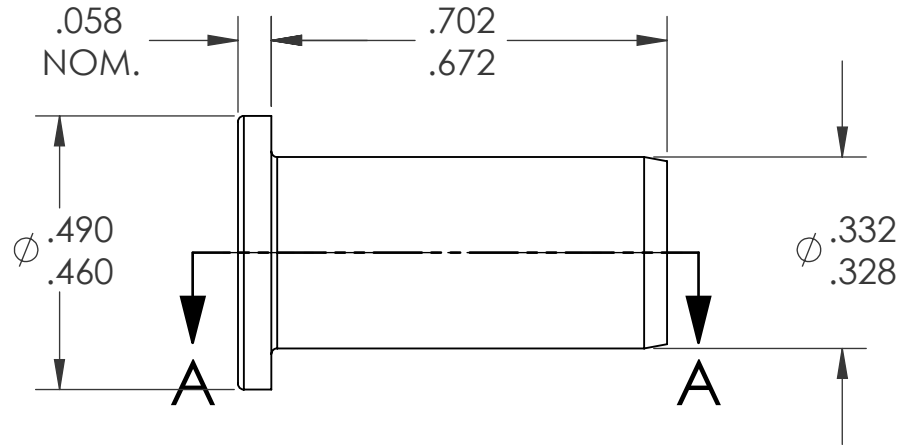
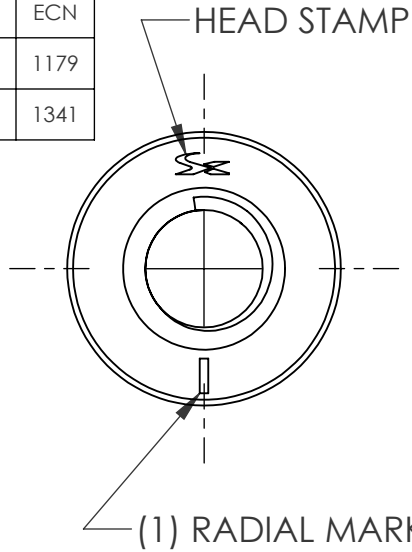
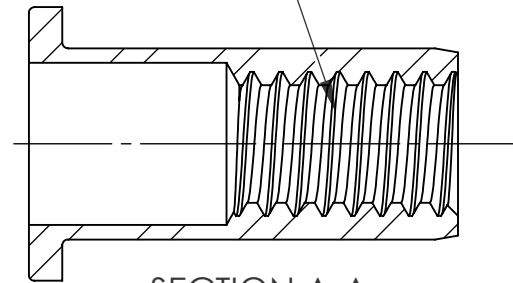
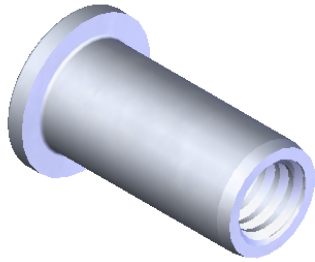


REVISIONS			
REV.	DESCRIPTION	DATE	ECN
A	INITIAL RELEASE	5/8/09	1179
B	UPDATE TO CURRENT FORMAT	7/28/10	1341



1/4-20 UNC 3B
PER ASME B1.1
MINOR DIA.: .1960 - .2067



SECTION A-A
SCALE 3 : 1

NOTE:

- GRIP RANGE: .080 - .140
- HOLE SIZE: .332 +.006/-.000 AFTER ALL APPLIED FINISHES.
- INSTALLED LENGTH: .450 REF.
- LUBRICATION: NONE
- INSTALLATION TOOL: SPIN-PULL

PROPRIETARY AND CONFIDENTIAL

THIS DRAWING, AND THE INFORMATION CONTAINED HEREIN, ARE THE PROPERTY OF SHEREX AND ARE NOT TO BE USED IN ANY MANNER DETRIMENTAL TO THE INTEREST OF THE COMPANY.
SHEREX SOLUTIONS RESERVES THE RIGHT TO REVISE PART/DRAWING WITHOUT NOTICE.

		UNLESS OTHERWISE SPECIFIED:		NAME	DATE	
		DIMENSIONS ARE IN INCHES TOLERANCES: ANGULAR: MACH ± 1 BEND ± 1 TWO PLACE DECIMAL ± .01 THREE PLACE DECIMAL ± .002	DRAWN	TWR	5/8/09	
		INTERPRET GEOMETRIC TOLERANCING PER: ASME Y14.5M-1994	CHECKED			
		MATERIAL	ENG APPR.	JVK	5/8/09	
		430 STAINLESS	MFG APPR.			TITLE:
		FINISH	Q.A.	JVK	5/8/09	FLAT HEAD OPEN END
		PASSIVATE	COMMENTS:	E-mail: info@sherex.com www.sherex.com Phone: 866-474-3739 Fax: 716-875-0358		SIZE DWG. NO.
NEXT ASSY	USED ON					A CA-2520SS-140
APPLICATION		DO NOT SCALE DRAWING				REV B
						SCALE: 2:1 WEIGHT: kg SHEET 1 OF 1